


RUIRUI  DENG

ARTHUR Lookbook

RUIRUI



DENG



RUIRUIDENG.CO.UK

RUIRUI



DENG



- Arthur -

Inspired by mediaeval legends and enchanted fairytales, RUIRUI DENG'S Arthur collection encourages the mind to wander deep into the depths of our imaginations, allowing us to free our subconscious and begin exploring magical forests while also discovering otherworldly creatures. The collection makes specific reference to the legend of King Arthur and The Knights Of The Round Table. From the structured silhouettes to the fabric materials, the collection started from the armour of the Knights and delved into the mysterious questions surrounding the illustrious legend.

The designer emphasises the fragile description of nature with the fabric selection, by consolidating delicate laces with iridescent silks. Each fabric is carefully celebrated by the designer, marrying unexpected textures together to work in perfect harmony. The colour palette reflects the designer's appreciation of nature, while also continuing to enhance the brand story, taking us on an adventure through the depths of a mystical forest. Using earthy shades of green merged with rich browns or muted blues inspired by the understated beauty of the natural environment.

The brand combined the imagined with the mysterious, out of an eccentric dream. RUIRUI DENG Arthur follows the story of fantastical mermaids exploring the depths of an enchanted forest and having romantic weddings in the mutual radiance of nature. The narrative sets a reminder that the magic and beauty found in these dreams should not just be something we view as fantasy but instead something we look to appreciate and recognise in our own world.

Each of the designs transports us to the fantastic world of RUIRUI DENG, creating a tangible bridge between the magical world and reality. This metaphor encourages us to romanticise our own lives and look for the beauty and magic within our own reality, rather than using our dreams to escape it.

RUIRUI



DENG



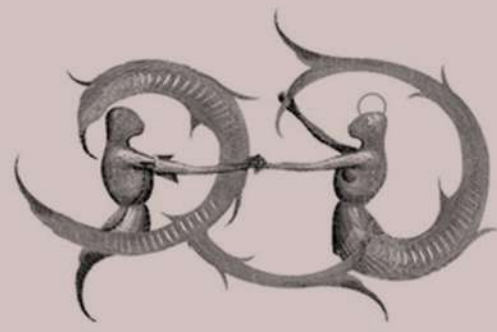
RUIRUI



DENG



RUIRUI



DENG



Half-sling tube top dress in our playful "slut design". The black half-side suspenders simulate the dynamic of taking off clothing, expressing women's bold attitude towards dressing, which disregards the male perspective. There are two pieces of lace in different colours on the skirt, which is fitted with mermaid lace and with a cropped side zipper.

PRODUCT CODE: D23032

SIZE AVAILABLE: S M L

SELLING PRICE: £485

WHOLESALE PRICE: £210

RUIRUIDENG.CO.UK

RUIRUI



DENG

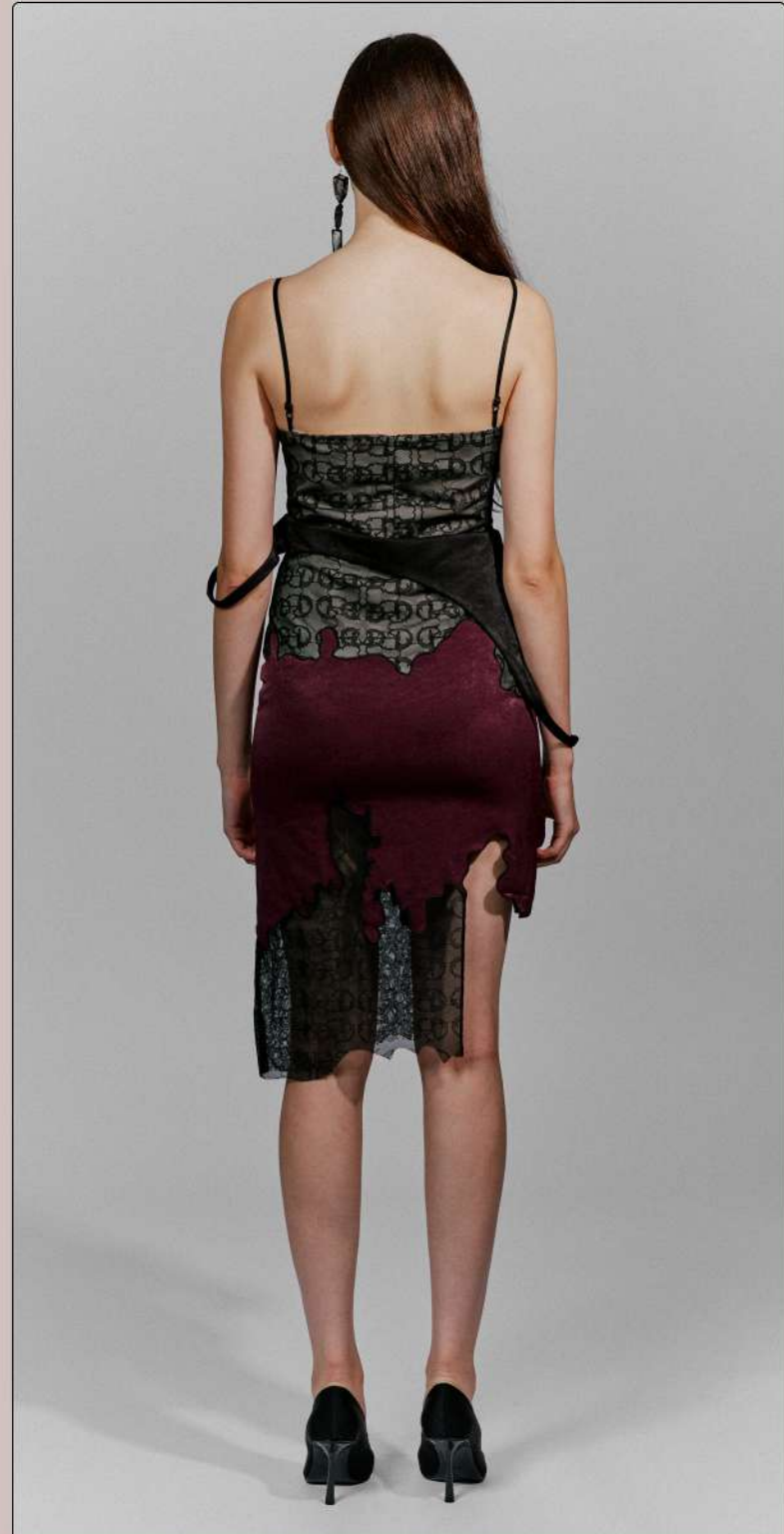


D23031

RUIRUI



DENG



Half-sling tube top dress in our playful "slut design". The black half-side suspenders simulate the dynamic of taking off clothing, expressing women's bold attitude towards dressing, which disregards the male perspective. There are two pieces of lace in different colours on the skirt, which is fitted with mermaid lace and with a cropped side zipper.

PRODUCT CODE: D23031

SIZE AVAILABLE: S M L

SELLING PRICE: £485

WHOLESALE PRICE: £210

RUIRUIDENG.CO.UK

RUIRUI



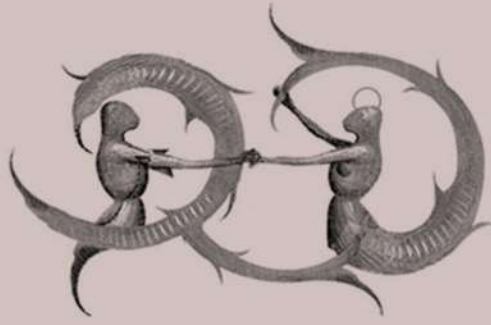
DENG



S23001

RUIRUIDENG.CO.UK

RUIRUI



DENG



Soft textured fabric skirt covered by ginger yellow mermaid lace, with a black mysterious streamlined lace stitching around the entire body, creating an enchantress feeling throughout. The high slit on the side is sexy and seductive, empowering the woman who walks in it.

PRODUCT CODE: S23031

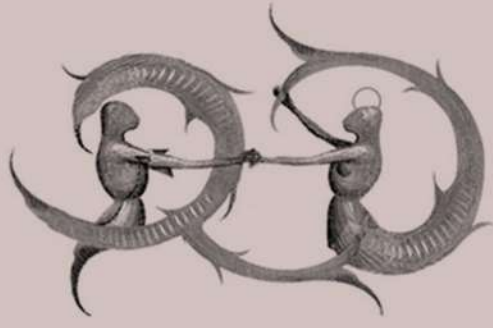
SIZE AVAILABLE: S M L

SELLING PRICE: £485

WHOLESALE PRICE: £194

RUIRUIDENG.CO.UK

RUIRUI



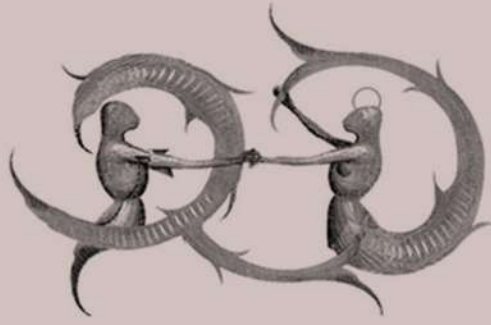
DENG

T23002

T23001



RUIRUI



DENG



PRODUCT CODE: T23001

SELLING PRICE: £465



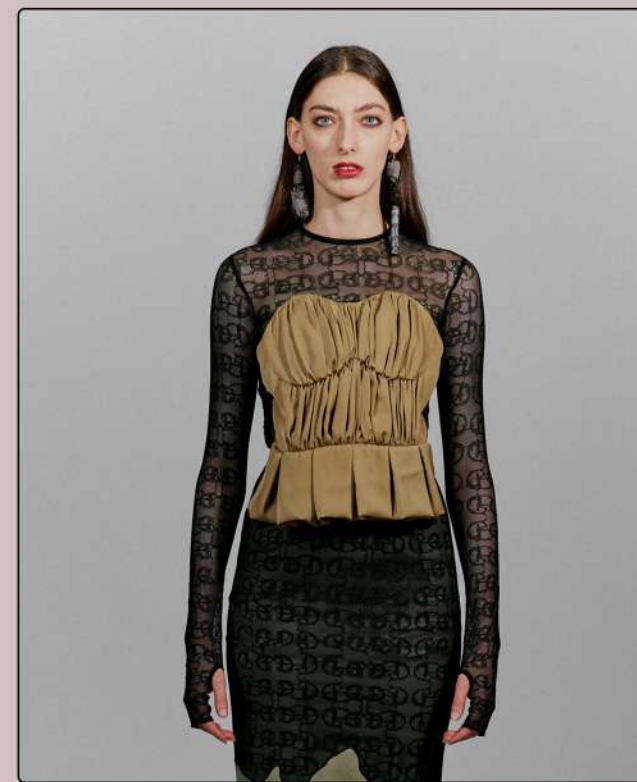
SIZE AVAILABLE: S M L

WHOLESALE PRICE: £186



PRODUCT CODE: S23002

SELLING PRICE: £465

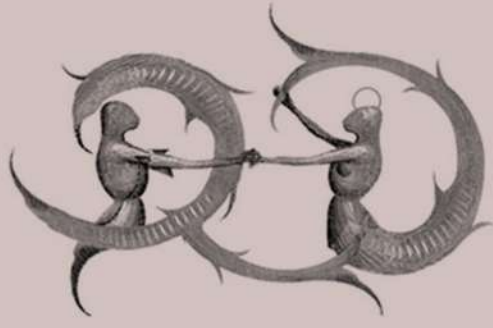


SIZE AVAILABLE: S M L

WHOLESALE PRICE: £186

A lace top with signature mermaid logo printing accompanied by zips on the back and sides. There is a silhouette along the front of the top with thumb holes on the sleeves making it more casual chic.

RUIRUI

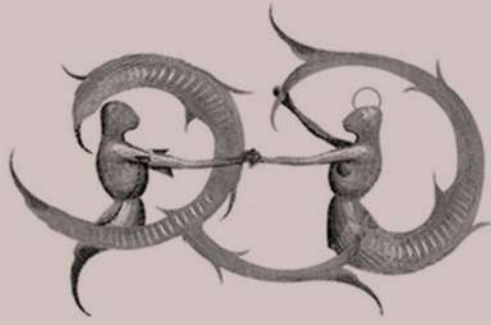


DENG



RUIRIDENG.CO.UK

RUIRUI



DENG



Mid-Waist Midi Skirt, an intriguing midi skirt designed with multiple layers, a threedimensional drape which reveal the satin black bottom and the front waist which is made from olive-green fabric flowing to the ankles.

PRODUCT CODE: S23002

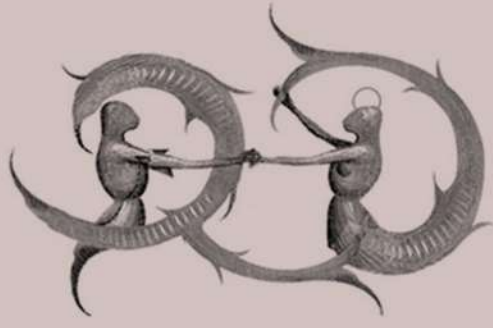
SIZA AVALIBLE: S M L

SELLING PRICE: £395

WHOLESALE PRICE: £158

RUIRUIDENG.CO.UK

RUIRUI



DENG



RUIRUI



DENG



PRODUCT CODE: S23003
SELLING PRICE: £485



SIZE AVAILBLE: S M L
WHOLESALE PRICE: £194



PRODUCT CODE: S23004
SELLING PRICE: £485



SIZE AVAILBLE: S M L
WHOLESALE PRICE: £194

RUIRUI



DENG



Soft textured silky skirt, with a black mysterious streamlined lace stitching around the entire body, creating an enchantress feeling throughout. The high slit on the side is sexy and seductive, empowering the woman who walks in it.

PRODUCT CODE: S23005

SIZE AVAILABLE: S M L

SELLING PRICE: £485

WHOLESALE PRICE: £194

RUIRUIDENG.CO.UK

RUIRUI



DENG



RUIRIDENG.CO.UK

RUIRUI



DENG



PRODUCT CODE: T23003

SIZE AVAILABLE: S M L

SELLING PRICE: £305

WHOLESALE PRICE: £132



PRODUCT CODE: S23006

SIZE AVAILABLE: S M L

SELLING PRICE: £325

WHOLESALE PRICE: £141

RUIRUI



DENG



Soft textured silky short skirt, with a ginger yellower mysterious streamlined lace stitching around the entire body, creating an enchantress feeling throughout. The short asymmetry edge is sexy and seductive, empowering the woman who walks in it.

PRODUCT CODE: S23007

SIZE AVAILABLE: S M L

SELLING PRICE: £305

WHOLESALE PRICE: £122

RUIRUIDENG.CO.UK

RUIRUI



DENG



RUIRIDENG.CO.UK

RUIRUI



DENG



PRODUCT CODE: MT23002

SIZE AVAILABLE: S M L

SELLING PRICE: £285

WHOLESALE PRICE: £114



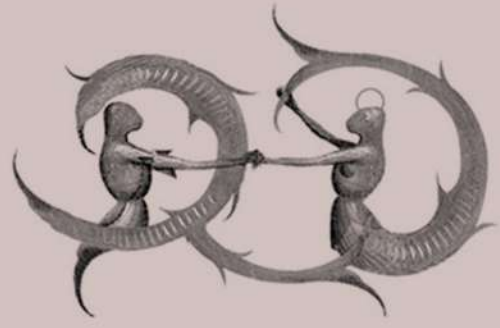
PRODUCT CODE: MB23003

SIZE AVAILABLE: S M L

SELLING PRICE: £185

WHOLESALE PRICE: £80

RUIRUI



DENG



PRODUCT CODE: MT23001

SIZE AVAILABLE: S M L

SELLING PRICE: £285

WHOLESALE PRICE: £114



PRODUCT CODE: MB23004

SIZE AVAILABLE: S M L

SELLING PRICE: £185

WHOLESALE PRICE: £80

RUIRUI



DENG



PRODUCT CODE: MT23004
SIZE AVAILABLE: S M L
SELLING PRICE: £285
WHOLESALE PRICE: £114



PRODUCT CODE: MB23002
SIZE AVAILABLE: S M L
SELLING PRICE: £255
WHOLESALE PRICE: £102

RUIRUI



DENG



PRODUCT CODE: MT23003

SIZE AVAILABLE: S M L

SELLING PRICE: £285

WHOLESALE PRICE: £114



PRODUCT CODE: MB23001

SIZE AVAILABLE: S M L

SELLING PRICE: £255

WHOLESALE PRICE: £102

RUIRUI



DENG



Hand-made textured long dress, with silver tube beads all around the front body, creating an couture feeling throughout. The volumed edge is cute and interesting, empowering the woman who walks in it.

PRODUCT CODE: D23331

SIZE AVAILABLE: S M L

SELLING PRICE: £1685

WHOLESALE PRICE: £674

RUIRUIDENG.CO.UK

RUIRUI



DENG



RUIRIDENG.CO.UK

RUIRUI



DENG



Hand-made textured wedding dress

PRODUCT CODE: D23342

SIZE AVAILABLE: S M L

SELLING PRICE: £1985

WHOLESALE PRICE: £794

RUIRUIDENG.CO.UK

RUIRUI



DENG



This jumpsuit is printed with our signature mermaid patterns. With a casual open collar allows you to have dropped shoulder sleeves. The front pocket is hidden inside a button.


PRODUCT CODE: MJ23001

SIZE AVAILABLE: S M L

SELLING PRICE: £325

WHOLESALE PRICE: £130

RUIRUIDENG.CO.UK

RUIRUI  DENG



Crocheted Cat Covered by signature mermaid lace, perfect table accessory.

PRODUCT CODE: 23CAT-1

SIZE AVAILABLE: M

SELLING PRICE: £685

WHOLESALE PRICE: £274

RUIRUIDENG.CO.UK