



Autumn/Winter 2023



## r.l.e Autumn/Winter 2023 collection story

r.l.e presented their AW23 collection in The White Loft, Underwood Works during London Fashion Week. The venue was transformed into an ethereal vision of white light and a blank slate, allowing the collection to flood the room with colour and imagination.

"What is the sense of security in our hearts that we are ultimately looking for?" This question is the overriding inspiration behind r.l.e's AW23 collection. The journey of discovering our subconsciousness is always confusing; the true heart can be dimly seen through the mists of the deep. One aspect of nature that inspired the designer a lot this season, was a bush she often passed, which looked disorienting in the dim light of the street lamps at night. From a distance, it looked like a thousand butterflies fluttering in the grass, while up close it was tiny flowers. Different circumstances and emotions can lead to varied perspectives and judgments; seeing the true root brings peace. Life is like an eggshell; we are wrapped in layers of petals. It is fragile yet tenacious, sensitive but strong. The butterflies in the illusion are analogous to insecurities, and the bloom of our inner flowers can only be discovered by facing one's true heart.

"All of these phantoms are like a true reflection of my heart. In my deepest inner heart, there is a small 'room' with a warm light trickling through. On the way to this room, I pass cascades of flower petals, which are the unconscious protective layer of my inner world. This 'room' has collected all the feelings and memories that make me feel secure; it is also like a book or a tea room for me. Every time I feel insecure or negative, I will venture to this room in my heart; I open the door and sit for a while, immersing myself in it. This allows me to rejuvenate my energy so I am ready to face the world again with a positive mindset," said Qixin.

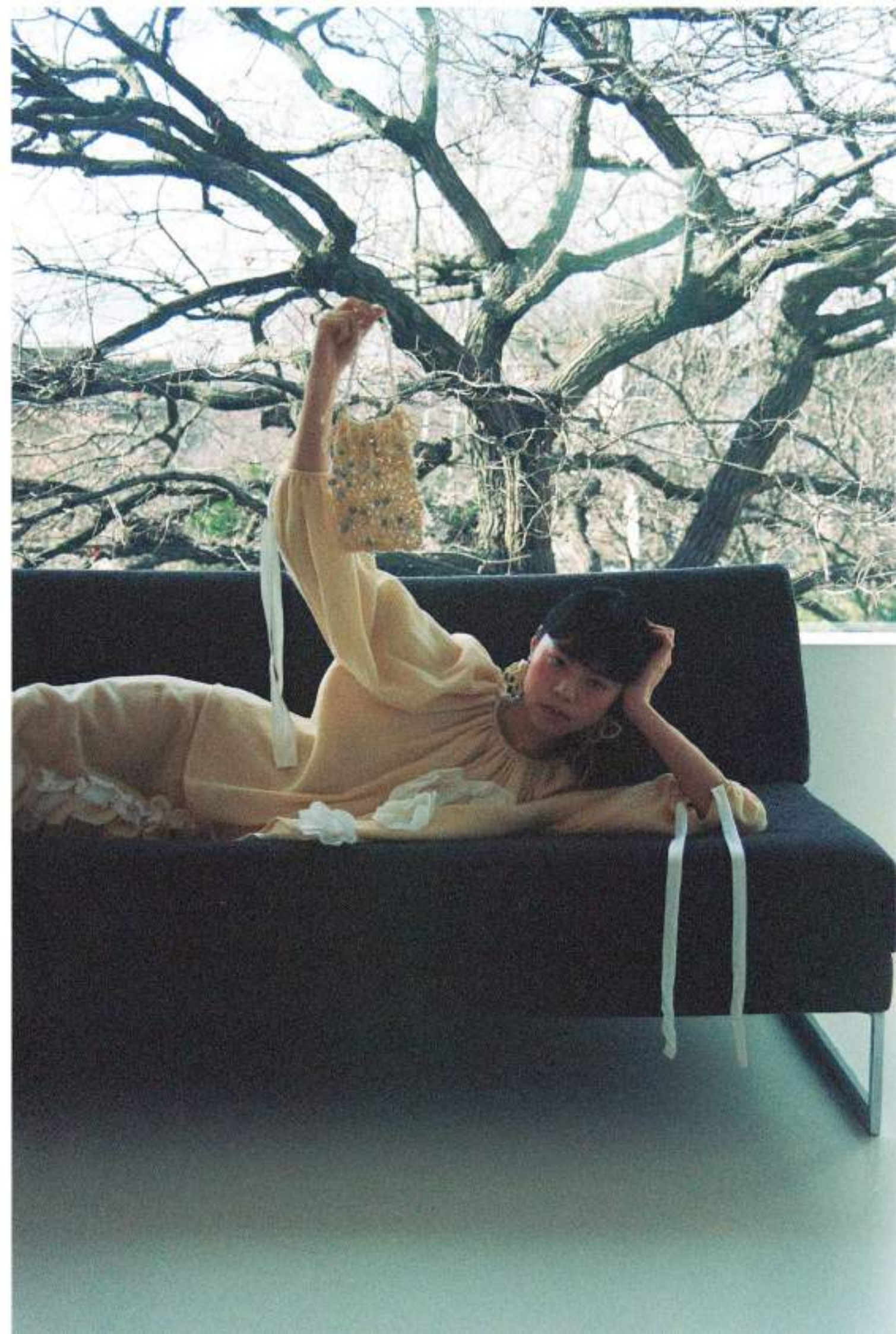
The AW23 series is full of soft puffy silhouettes, pleatings, and ruffles that gently wrap around the body. The designer hopes to convey a sense of security within the collection, seeing the person enveloped in softness. r.l.e continue to celebrate their most prominent muse within their AW23 collection, the authentic beauty of nature. The intricate details found in flowers, butterflies, and branches inspire the knitted elements of the design as well as various other fabrics.

r.l.e remains rigorous in its choice of quality materials. The selected skin-friendly yarns in the knitwear contain RWS-certified wool, filament silk, mohair, and organic cotton. r.l.e has always believed in the emotional connection between the garment and the wearer, as the softness of the fabrics and yarns visualise the inner world of human beings better and mimic their softest and safest places. By using premium quality materials, r.l.e believes that sustainability is not only about using eco-materials but also about creating something that lasts longer and brings everlasting joy. The handmade silk couture flower technique is continued to be used in the AW23 collection accessories design. "The warmth and uniqueness of hand-crafted pieces cannot be replaced, we have to slow down in this fast industry," said Qixin.

For their AW23 collection, r.l.e continues to deepen and develop its sustainable journey. The brand continues collecting the cut-off fabrics and remaking them into 3D yarns, transforming them into garments or accessories by utilising weaving and crochet techniques. The white hanging butterflies seen in the set design of the AW23 presentation come from the cut pieces of pattern paper; they are a by-product of the development of the collection, re-engineered, and cut into the key inspirations of AW23. A sustainable romance by r.l.e; everything has a chance to be made beautiful again. r.l.e continues the collaboration with jewellery designer Sara Chyan, choosing metals with a low melting point to create unique flowing jewellery pieces. The flowing metallic feel represents the metaphor between butterflies and flowers.



Gardenia Top / Gardenia Skirt



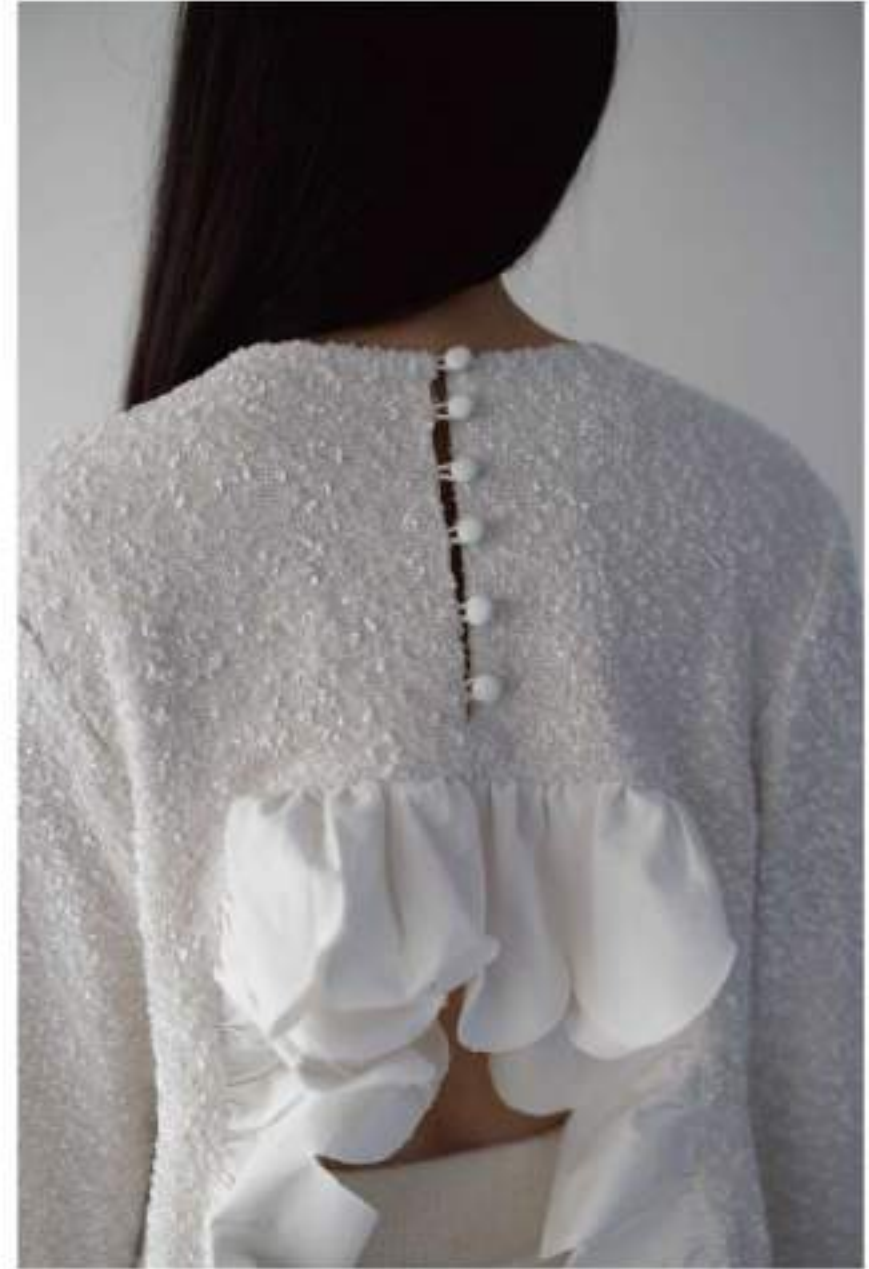


Bloom Jacket / Bloom Trouser



Bloom Jacket / Bloom Trousers





Bloom Jacket / Chou Lace Knit Trouser





Hug Cape / Hug Skirt





Lily Cape / Chou Lace knit Trousse





Chou Lace Knit Maxi Dress



Chou Lace Knit Dress



Chou Lace knit Top  
Chou Lace Knit Skirt







Butterfly Intarsia Top



Iris Knit Top / Iris Knit Skirt / Fleur Jacquard Top / Fleur Jacquard Trouser





Iris Knit Top / Iris Knit Skirt



Fleur Jacquard Dress / Butterfly Jacquard Hat



Petal Balaclava



Madame Butterfly Coat  
Wing Tie Top



Petal Wool Coat



Madame Butterfly Short Jacket  
Fleur Wide Trouser



Freyja Maxi Dress



Freya Maxi Dress/ Freyja Dress





Petal Wool Scarf

# Contact

We have a London-based atelier where each design can be customized and created in a choice of colours and fabrics.

Email  
[info@rlehouse.com](mailto:info@rlehouse.com)

For more info please visit  
[rlehouse.com](http://rlehouse.com)

London In-house Showroom  
Magnolia House,  
2 Makers Yard  
E3 3YL