


ISABEL  MANNNS

LONDON

The Underwater Eden Seasonless Collection

## The Underwater Eden Collection

The Underwater Eden Collection signifies the peaceful yet water drenched flower beds, with the beauty of rain droplets falling onto petals being the most prominent feature. Isabel used water like brushstrokes and overlaid these paintings to portray these magnified details.

The naturally flowing styles and the fabrics used fall effortlessly onto the body's contours, creating a calm, gentle sway when in motion, reminding us of the natural beauty of water and the gracefulness of the people who wear them.

This new seasonless 2022/23 collection comprises a variety of pieces that can be worn together as an outfit or combined with items from our previous collections. They are intended to be worn throughout the seasons, for many years to come, simply by reversing the items or styling them in different ways.

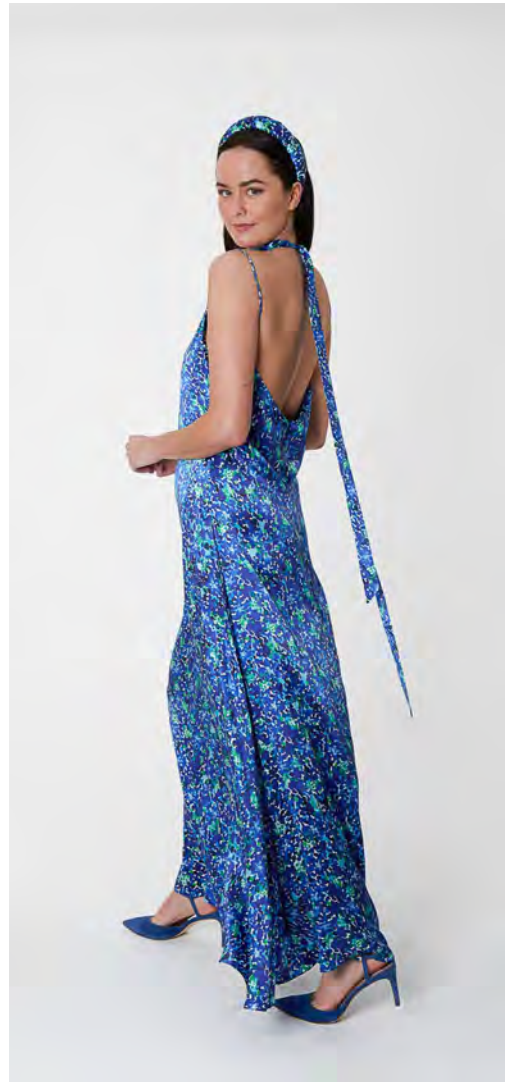




Ellie Silk Satin Slip Dress in Pond  
Life  
*Styled with our Pond Life Silk Satin  
Padded Headband*



Ellie Silk Satin Slip Dress in Dazzled  
Flora  
*Styled with our Dazzled Flora Silk Satin  
Padded Headband*





Patricia Silk Satin  
Halter Neck Dress in  
Emerald  
*Styled with our Emerald  
Silk Satin Headband*





Evie Silk Satin Dress in Emerald



REVERSIBLE  
Sophie Silk Top in  
Flecked  
Emerald/Cobalt  
*Styled with our Flecked  
Emerald Silk Satin  
Padded headband*







REVERSIBLE Chloe Silk Satin Dress in Flecked Emerald/Textured Navy  
*Styled with our Flecked Emerald Silk Satin Padded Headband*



Jessica Silk Satin Skirt in Flecked Emerald

*Styled with our Flecked Emerald Silk Satin Padded Headband* Photo Text



Bethany Silk Satin Dress in Aqua Flora  
*Styled with our Aqua Flora Silk Satin Padded Headband*





REVERSIBLE Daphne Silk Bamboo Wrap Dress in Dazzled Flora/Navy



Nancy Silk Satin Dress in Aqua Flora and REVERSIBLE Amanda Jacket in Dazzled Flora/Navy  
*Styled with our Aqua Flora Silk Satin Headband*





REVERSIBLE Patricia Silk Satin Halter Neck Dress in Dazzled Flora/Cobalt  
*Styled with our Dazzled Flora Silk Padded Headband*





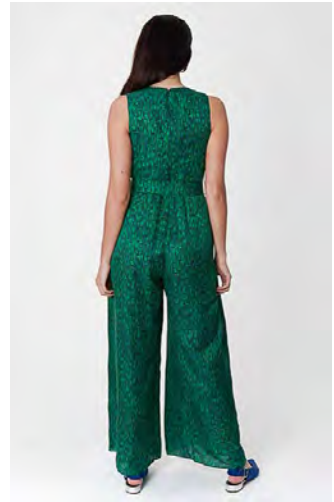
Jessica Silk Satin Skirt in Pond Life



Penelope Trousers in Textured Navy and Flecked Emerald and Emily Top in Flecked Emerald



Eva Silk Satin Dress in Flecked Emerald  
*Styled with our Flecked Emerald Silk Satin Headband*



Penny Silk Cotton Jumpsuit in Flecked Emerald  
*Styled with our Flecked Emerald Silk Satin Padded Headband*



Libby Silk Cotton Dress in Flecked Emerald  
*Styled with our Flecked Emerald Silk Satin Headband*





Penny Silk Cotton Jumpsuit in Violet  
Marinace  
*Styled with our Violet Marinace Silk Satin  
Padded Headband*



Nancy Silk Cotton Dress in Violet Marinace  
and REVERSIBLE Amanda Jacket in Dusty  
Pink Silk Satin/Pale Pink Cotton







REVERSIBLE  
Patricia Silk Satin  
Halter Neck Dress  
in Violet Marinace/  
Dusty Pink  
*Styled with our Violet  
Marinace Silk Satin  
Padded Headband*





REVERSIBLE Emma Silk Satin Skirt in Violet Marinace/Cobalt and  
REVERSIBLE Lily Top in Violet Marinace/Cobalt





REVERSIBLE Eleanor Top in Aqua Flora/Textured Navy and REVERSIBLE Emma Silk Satin Skirt in Aqua Flora/Textured Navy  
*Styled with our Dazzled Flora Silk Satin Headband*



REVERSIBLE Sophie Top in Dazzled Flora/Textured Navy and  
REVERSIBLE Emma Silk Satin Skirt in Aqua Flora/Textured Navy  
Georgia Trousers in Textured Navy  
*Styled with our Dazzled Flora Silk Satin Padded Headband*



Lisa Silk Satin Shirt in Dazzled Flora



Emily Top in Dazzled Flora and  
Jessica Skirt in Dazzled Flora





Esme Silk Bamboo Shirt Dress  
in Eden's Wildlife

*Styled with our Eden's Wildlife  
Padded Headband*





Lisa Silk Bamboo Shirt in Eden's Wildlife and Georgia Silk Jacquard Trousers in Textured Navy



Lizzy skirt in Eden's Wildlife Silk Bamboo







Esme Silk Bamboo Shirt Dress in  
Lawn Magic



[www.isabelmanns.com](http://www.isabelmanns.com)  
@isabel\_manns  
[wholesale@isabelmanns.com](mailto:wholesale@isabelmanns.com)  
Press: [lori@thepop.group](mailto:lori@thepop.group)