

COCO de Mer
LONDON



THE ICONS
WITH HELENA CHRISTENSEN



THE FEMALE GAZE REDEFINED

"I loved every part of the Icons campaign last year and am thrilled to collaborate with Lucy and Coco de Mer on another exciting concept and a wonderful team of inspiring women. Working on the previous campaign and having been a loyal Coco de Mer customer for years, I experienced how intrinsic the ethos is to the brand of truly championing female sensuality and inclusivity. By incorporating a fusion of different women and their unique visions, I hope we encourage women to celebrate their feminine power, and the phenomenal feeling you experience when wearing Coco de Mer.

- Helena Christensen

HERA







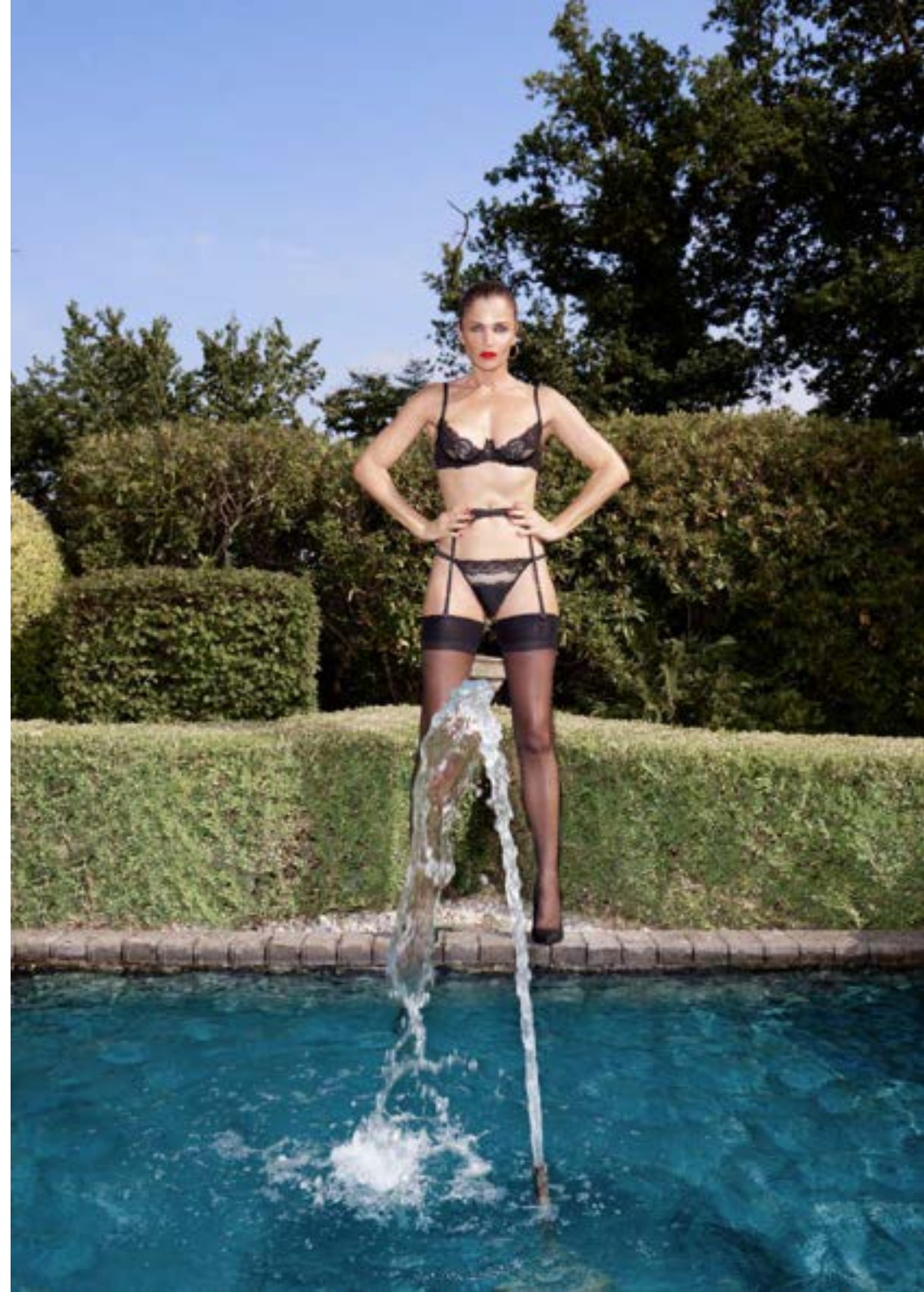
ATHENA







SERAPHINE









SYLPH







HERA







HERA

SLIP HER-028-01





ATHENA



BRAZILIAN KNICKER ATA-013-01







SERAPHINE













SYLPH







WHOLESALE

Beth Richmond
beth.richmond@coco-de-mer.com
+44 (0)7727 803 403

Sophie Rimmington
sophie.rimmington@coco-de-mer.com
+44 (0)20 3119 2083

MEDIA & PRESS

TRACE Publicity
cocodemer@tracepublicity.com

Lucy Litwack
lucy.litwack@coco-de-mer.com

HEAD OFFICE

5 Ching Court
61-63 Monmouth Street
London WC2H 9EY
+44 (0)20 3119 2083

BOUTIQUE

23 Monmouth Street
London WC2H 9DD
+44 (0)20 7836 8882

WWW.COCO-DE-MER.COM



Coco de Mer
LONDON