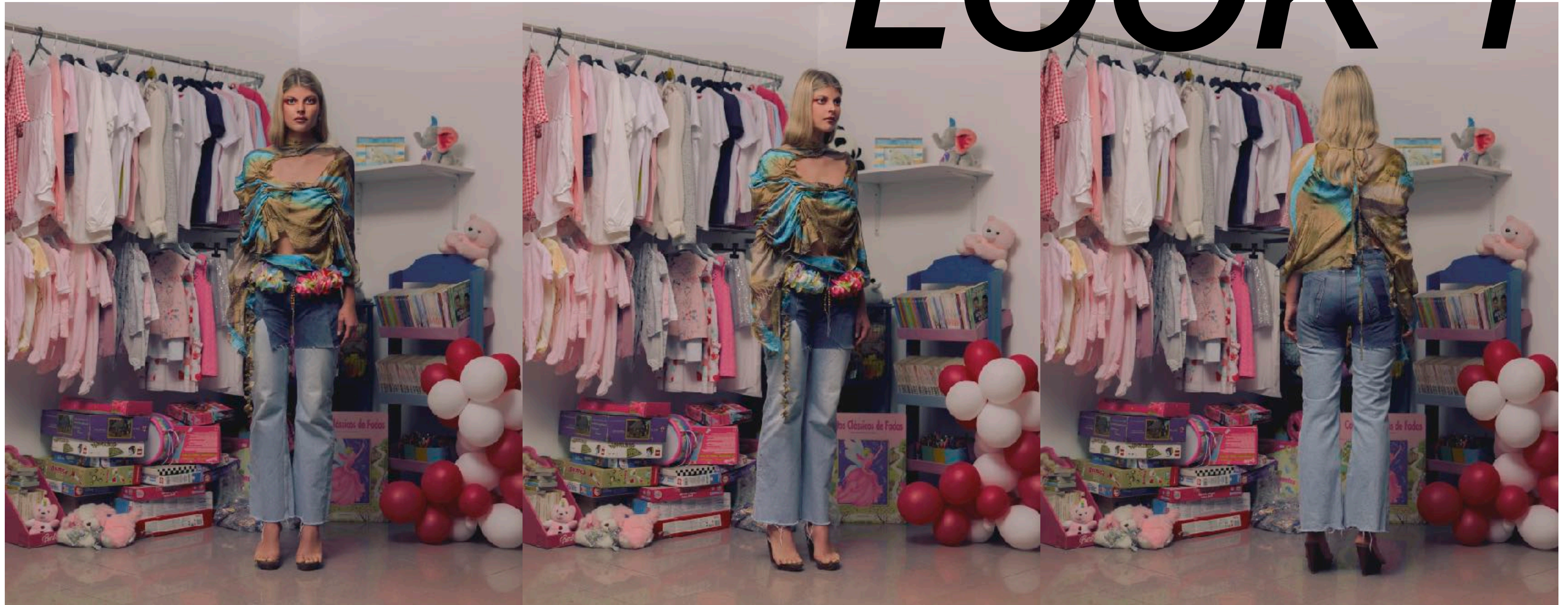


MARIA DO CARMO STUDIO

ss22

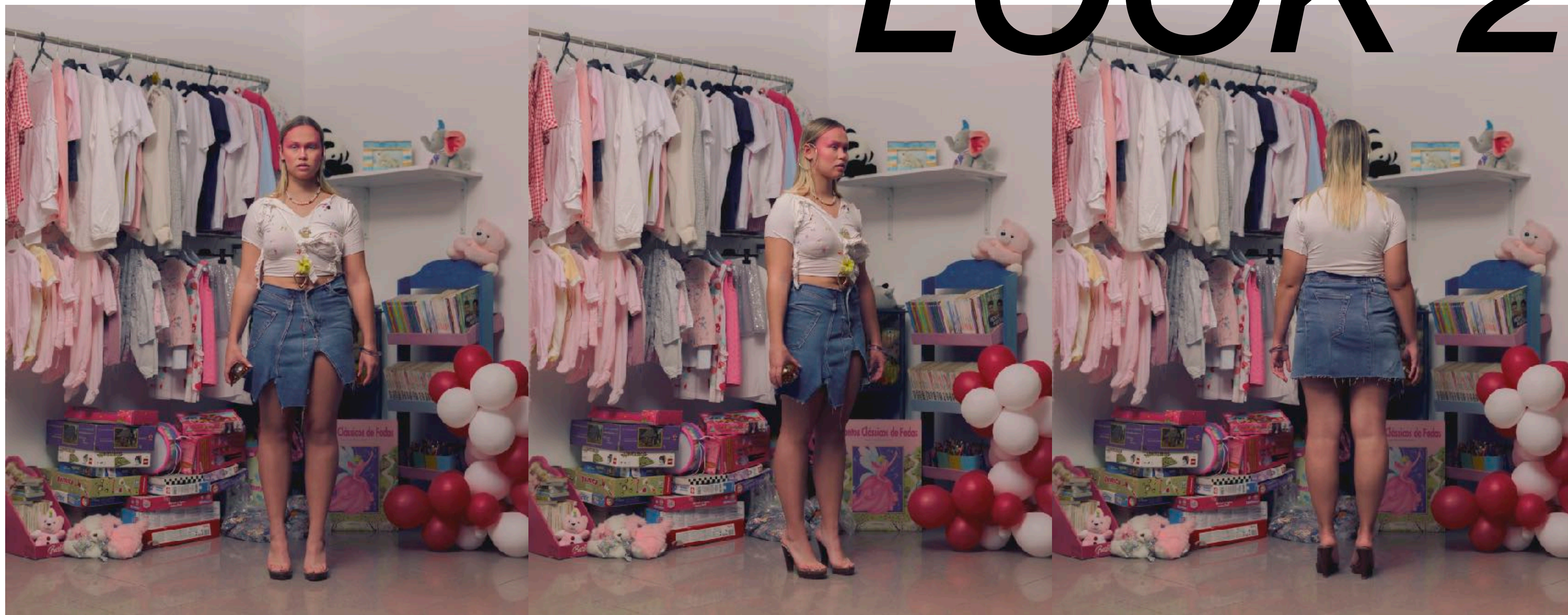
PHOTOGRAPHY *IGOR PJÖRRT*
MAKE-UP *ADRIANO FERREIRA*

LOOK 1



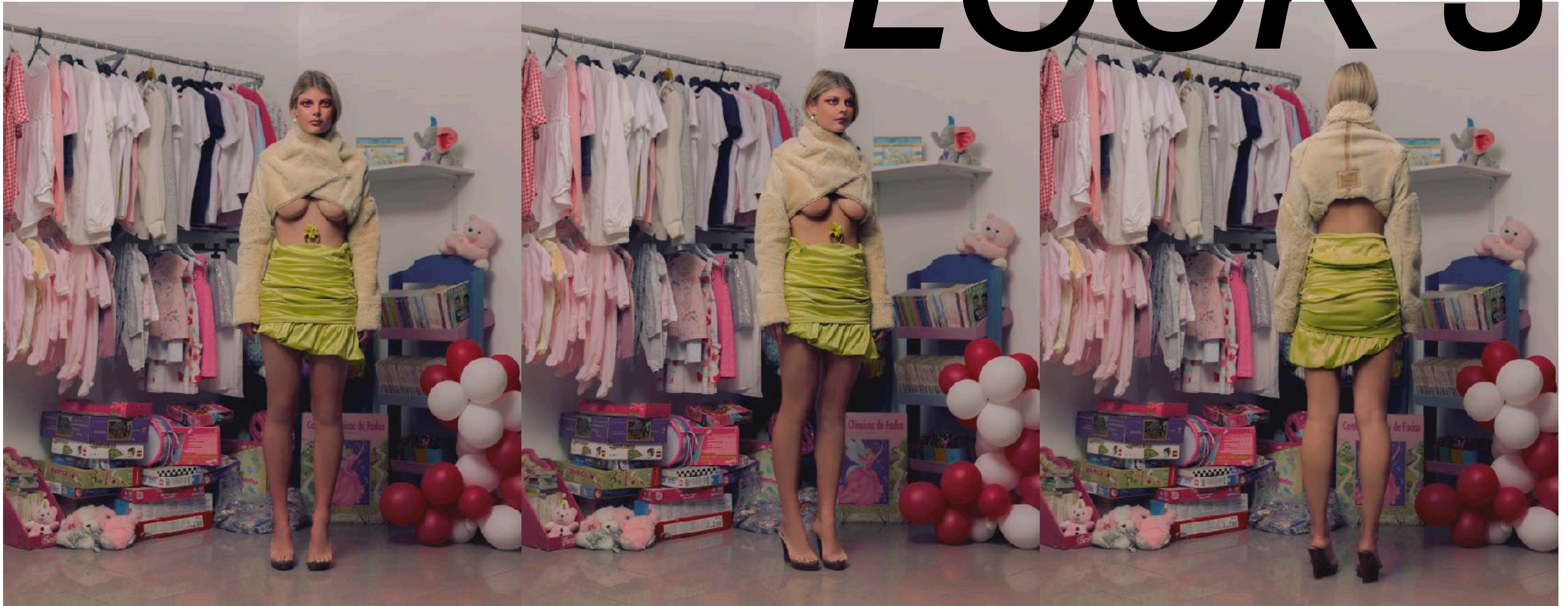
PONCHO TOP MADE WITH USED 2000's DRESS
DENIM SHORTS MADE WITH VARIOUS CUTS OF SEVERAL PAIRS OF JEANS
FLOWER BEAD BELT USING FAUX FLOWERS AND DONATED BEADS
(STYLING) JEANS, UNKNOWN BRAND

LOOK 2



*BEAD TOP MADE FROM USED KID'S T-SHIRT AND DONATED BEADS
DENIM SKIRT MADE FROM A USED PAIRS OF JEANS
ACCESSORIES FISH NECKLACE AND HEART NECKLACE MADE FROM FOUND OBJECTS*

LOOK 3

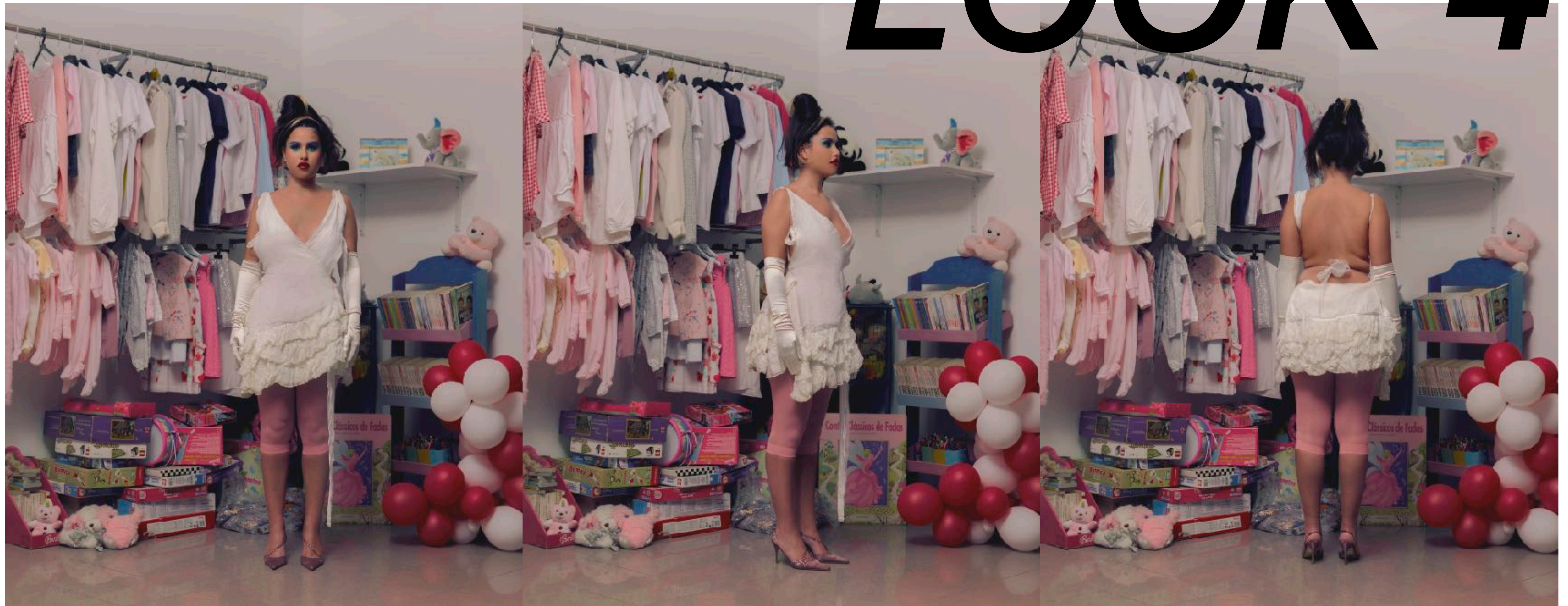


MINI FLUFF JACKET MADE FROM USED LAMB'S FUR JACKET AND CREME LEATHER JACKET PARTS

NEON MINI-SKIRT MADE FROM USED 2000'S DRESS

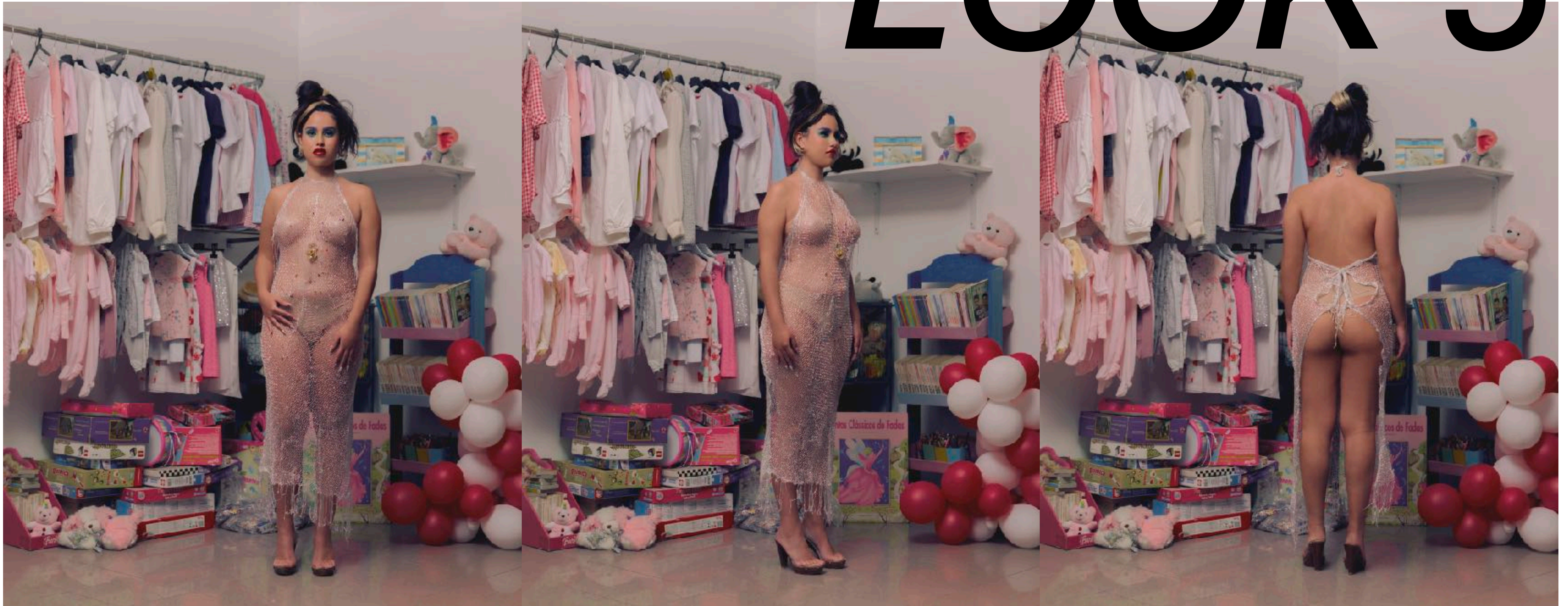
ACCESSORIES HEART NECKLACE MADE FROM FOUND OBJECTS

LOOK 4



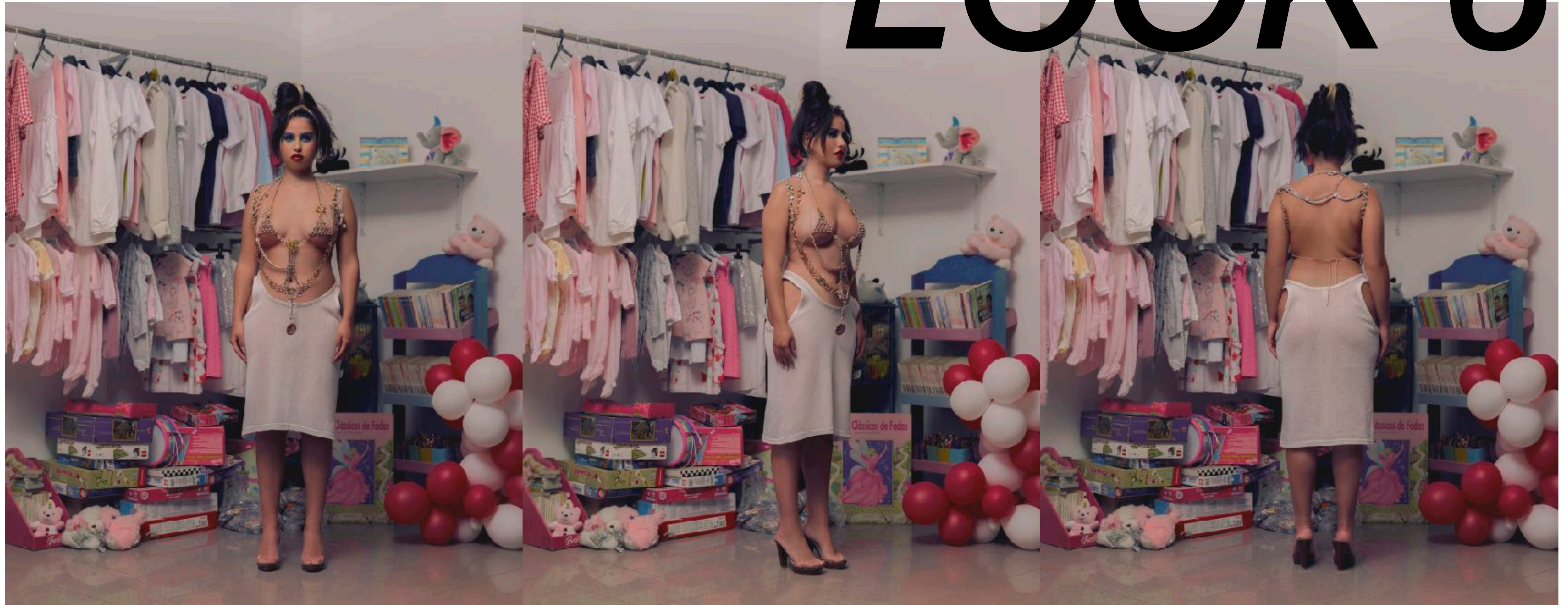
LITTLE WHITE DRESS MADE FROM A VINTAGE WEDDING GOWN
(STYLING) GLOVES, UNKNOWN BRAND

LOOK 5



SCARF DRESS MADE WITH USED SCARF AND DONATED BEADS
ACCESSORIES DOGGY NECKLACE MADE FROM FOUND OBJECTS

LOOK 6



*JEWELLERY TOP MADE FROM REPURPOSED JEWELLERY
(STYLING) WHITE TOP, UNKNOWN BRAND*

LOOK 7



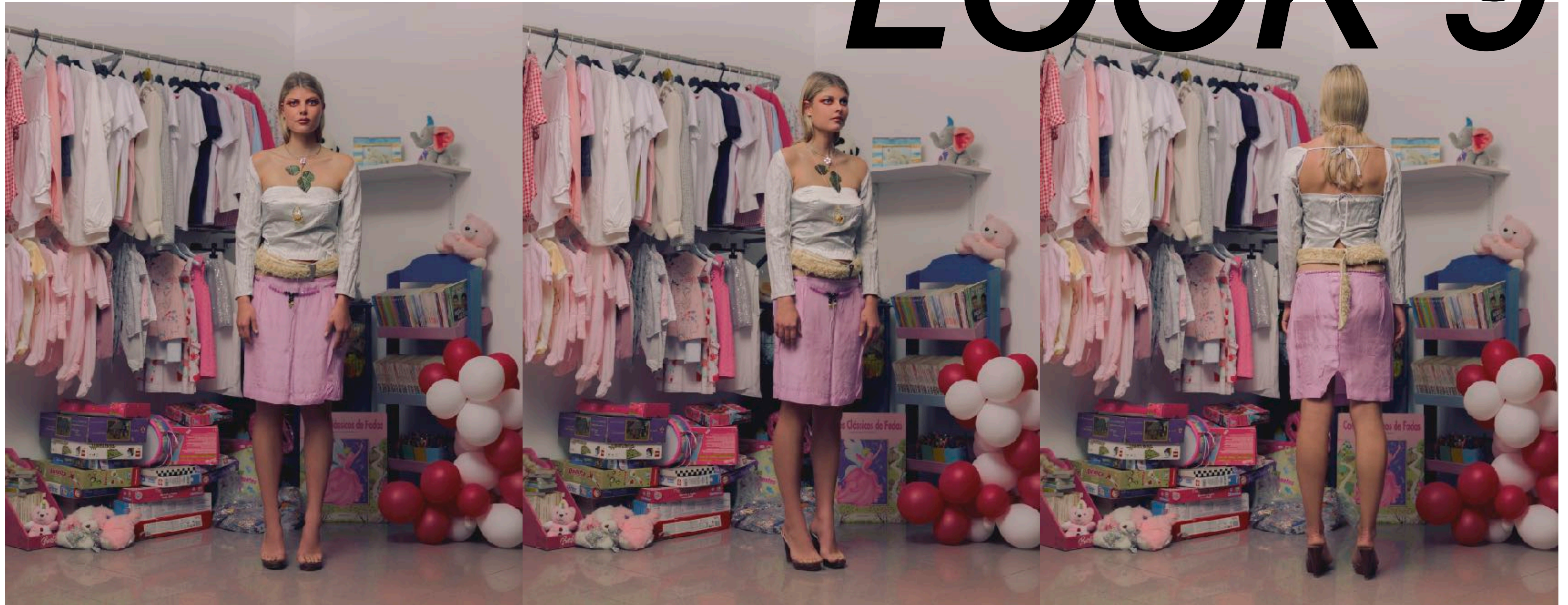
PUFFER COAT MADE FROM 1 ADULT SIZE DUVET AND 1 CHILD'S MATTRESS COVER

LOOK 8



CREME LEATHER JACKET & CREME LEATHER MINI-SKIRT BOTH MADE FROM A USED LEATHER JACKET
ACCESSORIES FISH NECKLACE AND HEART NECKLACE MADE FROM FOUND OBJECTS

LOOK 9



SILVER TOP MADE FROM USED JACKET
LILAC PENCIL SKIRT MADE FROM SKIRT LINING
FAUX FUR BELT MADE WITH USED FAUX FUR JACKET AND LEATHER JACKET PARTS
LILAC BEAD BELT MADE WITH DONATED BEADS
ACCESSORIES DOGGY NECKLACE AND LEAF NECKLACE MADE FROM FOUND OBJECTS

LOOK 10



BLUE PRINCESS TOP MADE FROM USED BLUE DRESS
PENCIL SKIRT WITH LEATHER TRIM MADE FROM USED BLUE DRESS, USED WHITE SKIRT LINING AND USED LEATHER JACKET PARTS
LEATHER BELT MADE WITH LAMB FUR JACKET PARTS AND LEATHER JACKET PARTS
ACCESSORIES LEAF NECKLACE MADE FROM FOUND OBJECTS

LOOK 11



*FADED DENIM TOP WITH EMBROIDERED DETAIL & FADED DENIM MINI-SKIRT BOTH MADE FROM SEVERAL DENIM JACKET PARTS
ACCESSORIES HEART NECKLACE MADE FROM FOUND OBJECTS*

LOOK 12



INSIDE-OUT LEATHER JACKET MADE FROM LEATHER JACKET PARTS
MINI-MINI-SKIRT MADE FROM USED 2000'S DRESS
BLUE&YELLOW BEAD BELT MADE FROM DONATED BEADS
ACCESSORIES DOGGY NECKLACE AND LEAF NECKLACE MADE FROM FOUND OBJECTS

LOOK 13



*SWIRL DRESS MADE FROM USED A NIGHTGOWN AND PARTS OF A SLIP DRESS
(STYLING) GLOVES, UNKNOWN BRAND*