

# HOTLIPS

BY SOLANGE



25 CHILWORTH STREET LONDON W2 3HA

[GAIA@SOLANGE.CO.UK](mailto:GAIA@SOLANGE.CO.UK)



## SOLANGE AZAGURY-PARTRIDGE

Solange is a British designer who has been making exceptional jewellery for the creative at heart for over thirty years. She is the creative director of her eponymous fine jewellery brand Solange, and started the Hotlips by Solange brand in 2018.

Her jewellery is featured in the permanent collections of the Victoria & Albert Museum in London as well as the Les Arts Décoratifs at the Louvre Museum in Paris.

Self-taught, the first piece of jewellery Solange designed was her own engagement ring in 1987.



**HOTLIPS**  
BY SOLANGE



## ABOUT HOTLIPS

The first Hotlips ring was created in 1995 as the embodiment of the perfect lipstick on a beautiful, kissable mouth.

Originally inspired by four classic lipstick colours - Classic Red, Nude, Bubblegum Pink and Black Cherry - these icons remain some of our best sellers to this day. The collection has since expanded to include a myriad of pop colours, patterns, and precious materials; each release as unique as the individual wearer.

## AN ICON OF MODERN JEWELLERY

Instantly beloved by press and celebrities, the Hotlips has been featured in top publications and seen on the the world's most stylish women. In 2008, the Classic Red Hotlips was acquired by the Victoria & Albert Museum for their permanent jewellery collection.



## DESIGN

Each Hotlips ring starts its journey in the design phase. Solange starts with an idea or mood, working with her team based out of her West London studio, to create either hand sketches or 3D models to bring her thoughts to life.

The designs are then refined through creating 3D prints, casting and polishing silver samples made by our London based workshops, and hand-mixing enamel to achieve the perfect colour.

No detail is left untouched to ensure every aspect is perfect before approving the final design.

## QUALITY CRAFTSMANSHIP

Every ring is handmade and hand painted in enamel by skilled craftsman who have honed their skills over decades of experience in the fine jewellery trade.

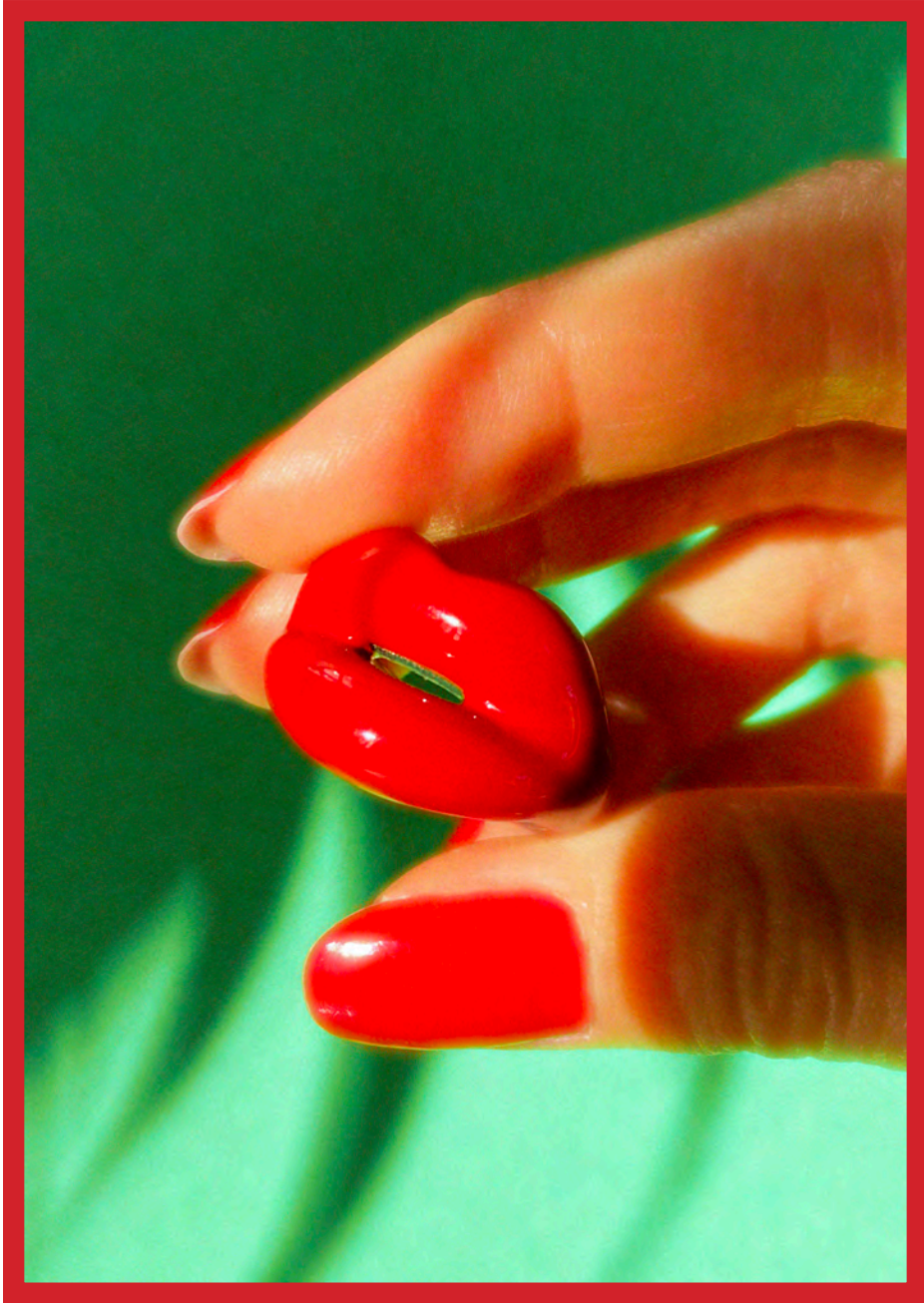
Only the finest 100% recycled sterling silver and enamel resins are used in the creation. We ensure everyone we work with is a member of the Responsible Jewellery Council who have the utmost respect for human rights and the planet.



## HALLMARK

Once a ring is created, it undergoes a thorough quality control inspection. Once passed, each piece is individually hallmarked by the UK Goldsmiths Company Assay Office to be independently tested for quality and fineness of material.

The hallmarking present on every piece conveys the material, the designer who made it, the location of hallmarking, and the date of manufacture.



**HOTLIPS**  
BY SOLANGE

# ICONS



CLASSIC RED



BLACK CHERRY



BLACK



DUSKY PINK



NUDE



SILVER



WHITE

# BRIGHTS



BUBBLEGUM PINK



JUICY RED



BANANA YELLOW



ROYAL BLUE



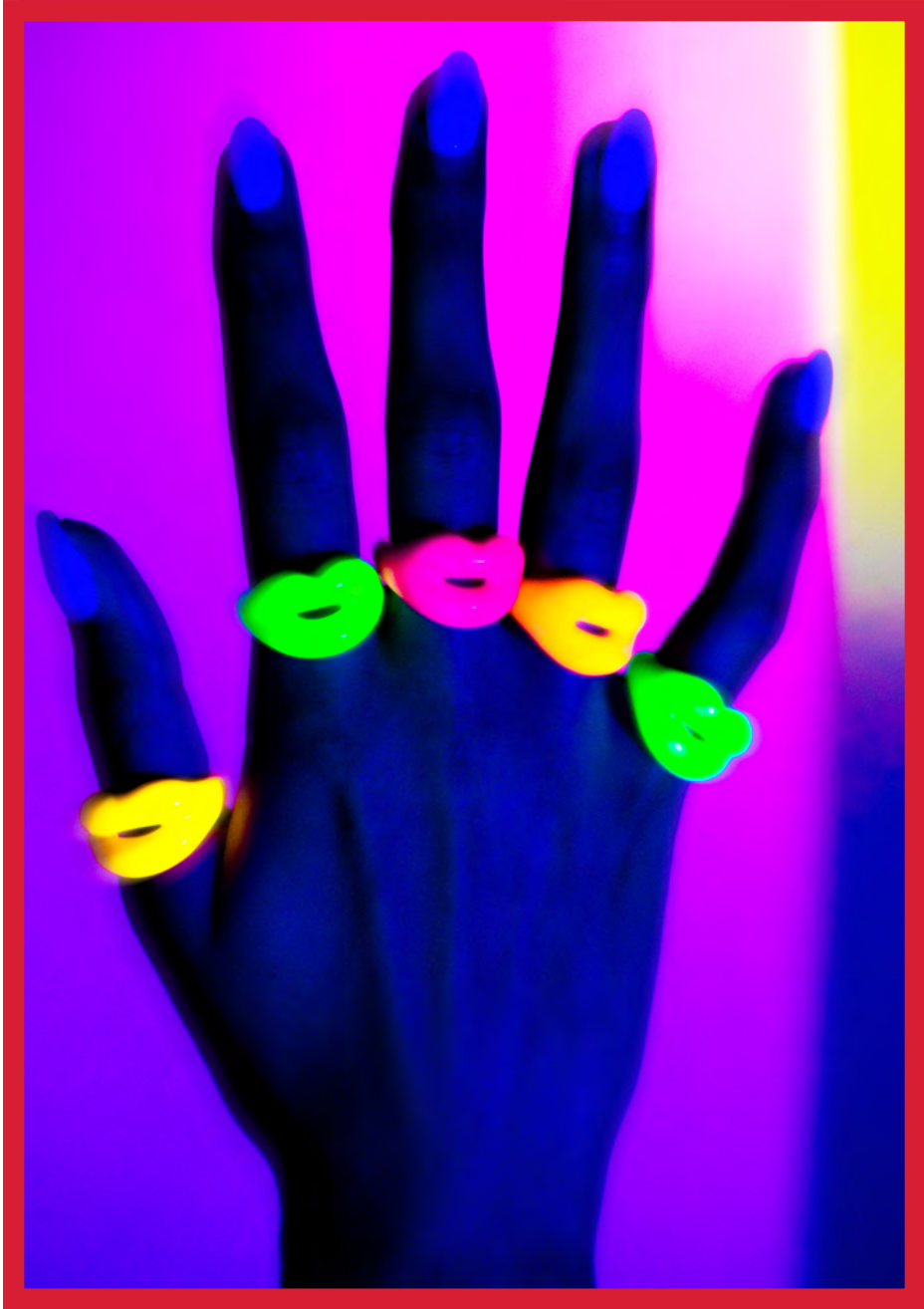
GLOW IN THE DARK



GREEN



**HOTLIPS**  
BY SOLANGE



**HOTLIPS**  
BY SOLANGE

# NEONS



NEON ORANGE



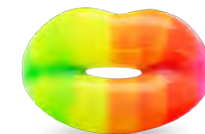
NEON PINK



NEON YELLOW



NEON GREEN



NEON RAINBOW

# GLITTERS



GLITTER PINK



GLITTER GOLD



GLITTER SILVER



GLITTER BLACK



GLITTER RAINBOW



**HOTLIPS**  
BY SOLANGE





**HOTLIPS**  
BY SOLANGE

# PATTERNS



UNION JACK



LOVE HEART



SMILEY FACE



RAINBOW



RIBBON



**HOTLIPS**  
BY SOLANGE

# PATTERNS



ICICLE



SNOWFLAKE



WHITE TIGER



LEOPARD



STARRY NIGHT



SNAKE

# HOTSCRIPTS



BITCH



LOVER



LADY



BABE



HOTTIE



MINX



ANGEL



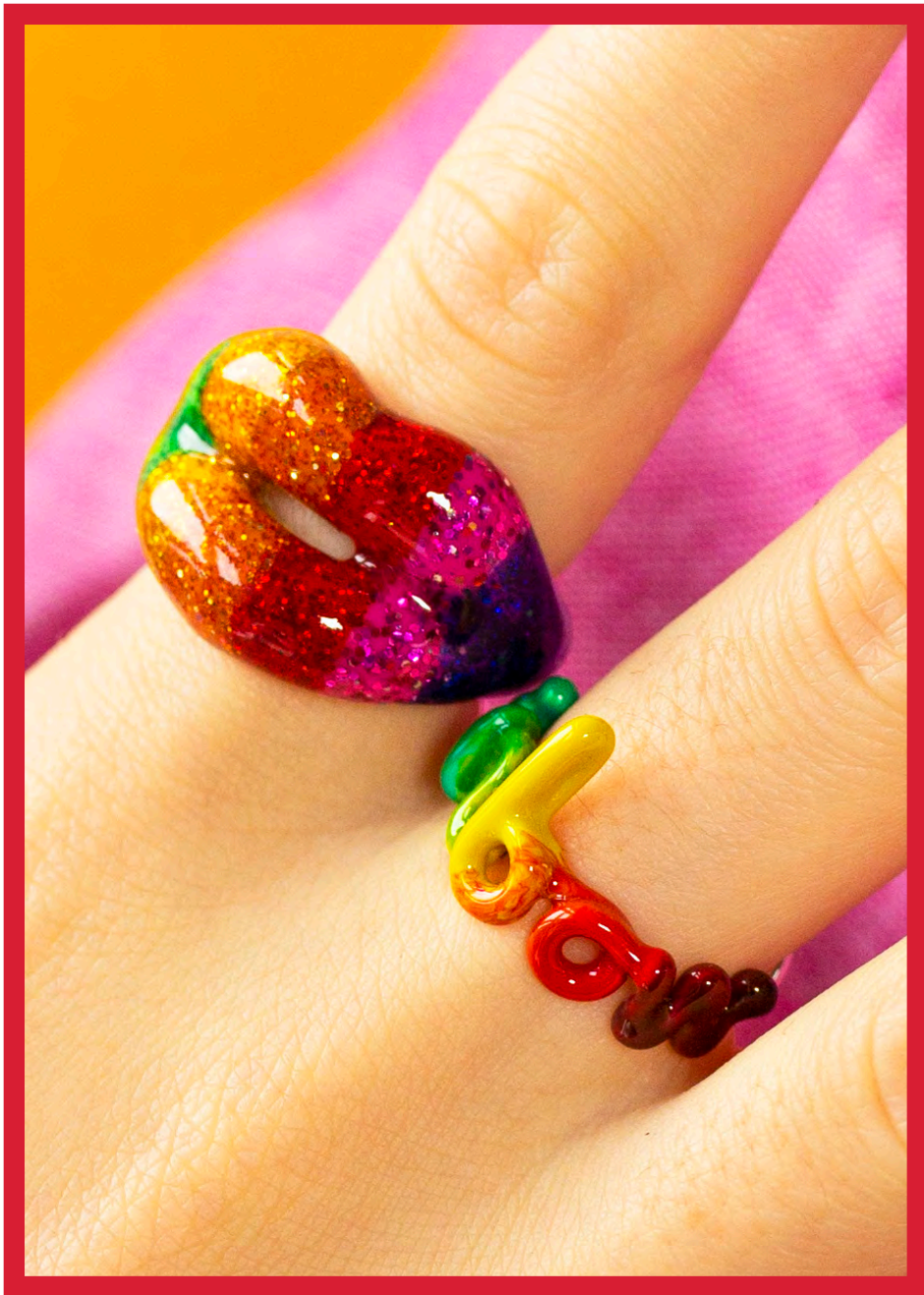
VAMP



DARLING



**HOTLIPS**  
BY SOLANGE



**HOTLIPS**  
BY SOLANGE

# HOTSCRIPTS



GODDESS



FOXY



SEXY



QUEEN



DIVA



STAR



RAINBOW



FRIEND



MAMA

# HOTSCRIPTS



FUCK



CHERIE



SISTER



HONEY



BITCH



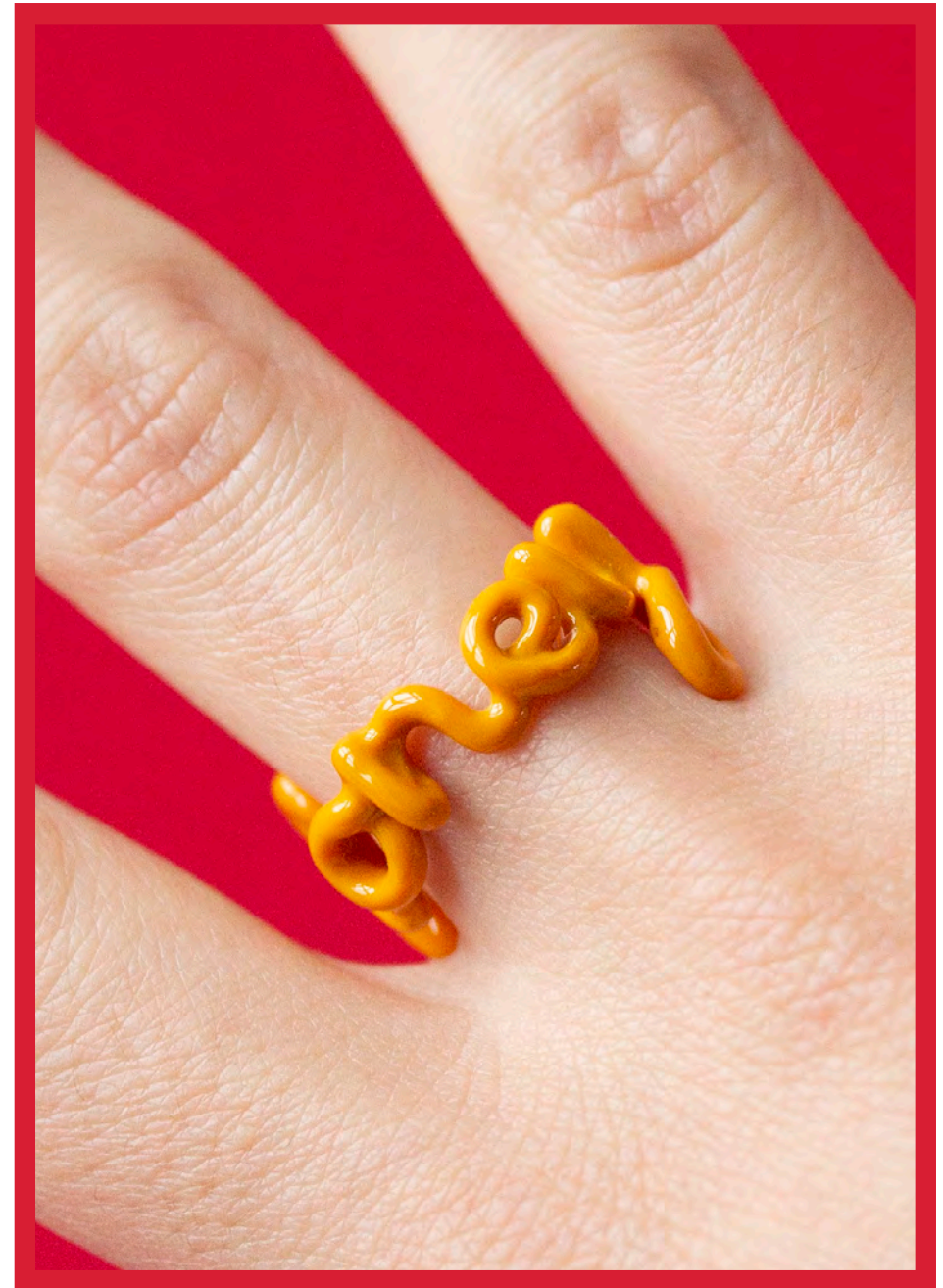
SUGAR



FUCK



WITCHY





**HOTLIPS**  
BY SOLANGE

# HOTGLYPHS



AQUARIUS



ARIES



TAURUS



LIBRA



CANCER



LEO

ALL ZODIACS AVAILABLE SEPTEMBER 2023

AQUARIUS   ARIES   CANCER   CAPRICORN   GEMINI   LEO  
LIBRA   PISCES   SAGITTARIUS   SCORPIO   TAURUS   VIRGO



**HOTLIPS**  
BY SOLANGE

# HOTGLYPHS



EYE



HEART



RAINBOW



SUN



STAR

**HOTLIPS**

BY SOLANGE



We've dipped our silver rings in gold and have created a collection of all your favourites in vermeil. Adding luxe to our world of colour.

#### **GOLD VERMEIL**

Vermeil is a technique that applies gold to sterling silver pieces of jewellery or objects. This gives the lustre of gold on a quality piece that stands the test of time without the higher price tag of solid gold.

Here at Hotlips by Solange we use a high level of gold (18 karat) and apply it to our 100% sterling silver jewellery in a thick layer (3 microns). This gives it the beautiful lustre of gold on a quality and responsible metal.

CLASSIC | ICONIC | THE ORIGINAL | NOW DIPPED IN GOLD



**HOTLIPS**  
BY SOLANGE



HOTLIPS



# VERMEIL



BABE



BITCH



FUCK



HOTTIE



LOVER

**HOTLIPS**  
BY SOLANGE

# VERMEIL



AQUARIUS



ARIES



CANCER



CAPRICORN



GEMINI



LEO



**HOTLIPS**  
BY SOLANGE



**HOTLIPS**  
BY SOLANGE

# VERMEIL



LIBRA



PISCES



SAGITTARIUS



SCORPIO



TAURUS



VIRGO

# VERMEIL

HOTLIPS  
BY SOLANGE



EYE



HEART



RAINBOW



STAR



SUN



**HOTLIPS**  
BY SOLANGE



**KISS MY LIPS**  
THE NEW SCENT BY SOLANGE

# KISS MY LIPS

‘When I kissed you girl, I knew how sweet a kiss could be, like the summer sunshine, pour your sweetness over me...’ These lyrics to “Sugar, Sugar” by the Archies, the first record Solange ever bought as a 7 year old girl, is one of the inspirations for Kiss My Lips, her new **EAU DE PARFUM.**

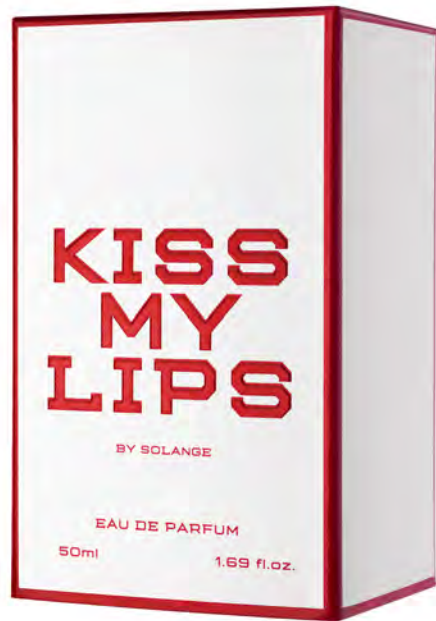
With a perfume pump in the shape of her classic red Hotlips ring, housed in a jewel of a bottle that anyone would love to have on display, the perfume comes through the gap in the lips, sending the wearer a **PERFUMED KISS.**

Solange wanted to bottle a feeling and a sensation. Not just a scent, but something that lingers and leaves a lasting impression, like a kiss. To evoke a young, fun and happy summer’s day full of sunshine, sugar, spice and all things nice. Like hot caramel sugar with a hint of lemon, **FRESH, SWEET, ZINGY AND BRIGHT.**

That smell of **HOT SUGAR** and **TANGY LEMON** with a **SMUDGE OF BUTTER** described by Solange has been captured by the nose Lyn Harris. Sparkling top notes of lemon Italy, with bergamot Sicily and grapefruit rind fused with a touch of raspberry and orange flower, sealed with a sprinkling of sugared white musk and white cedar from the Atlas Mountains.

Kiss My Lips takes the feeling of wearing a Solange piece beyond the physical and into a whole new **SENSORIAL DIMENSION.**

**HOTLIPS**  
BY SOLANGE



**KISS MY LIPS**  
EAU DE PARFUM    SCENTED CANDLE



**HOTLIPS**  
BY SOLANGE

# CHOCLIPS



## CHOCLIPS AND THE GOLDEN TICKET

With every bar there is the chance to find a **Golden Ticket**. The Golden Ticket wins you a Hotlips ring! You have a 1 in 25 chance of winning!

Milk chocolate kisses handmade in the UK to a Belgian chocolate recipe. The perfect balance between sweet caramel notes and a smooth cocoa body.



## TERMS AND CONDITIONS

“The Company” means Solange Ltd.

“The Goods” means the products, articles or accessories which are supplied by The Company

“The Buyer” means the corporate entity or person being the purchaser of The Goods.

All orders placed by The Buyer for The Goods are subject to these terms and conditions and must be adhered to. No variation of these Terms and Conditions is permitted unless accepted by The Company in writing.

### MINIMUM ORDER QUANTITY

- For first-time buyers there is an initial launch order with a minimum value of £3,000.
- Following the initial launch order there will be a minimum order value of £2,000.
- There is a minimum order value of £1,500 for the Kiss My Lips Perfume and Candle combined.
- The company reserves the right to alter these minimums at any time. The Company will endeavour to give notice of any proposed changes in this respect.
- Once a Purchase order has been placed and the invoice has been issued, The Company will not accept changes to the order.
- Any additions of The Goods to the Purchase Order must be requested.
- Should The Buyer require a large volume of a particular product then please discuss your requirements first.
- If there are any issues with stock availability The Company will notify The Buyer.

### PRICING/MINIMUM RETAIL PRICES

- All goods come with an RRP, and goods must not be priced under this amount.
- All prices are listed in GBP. (International pricing guideline available.)
- The Company reserves the right to alter these prices at any time unless prior invoiced. The Company will give at least 30 days' notice.

### WHOLESALE DISCOUNT PRICE

- All prices are listed in GBP. All authorised retailers will receive 40% off the RRP UK retail incl VAT. Vat will be removed for Export.
- Hotlips products are to be excluded from any promotion, or sales. Discounts are not permitted under any circumstance.

### PAYMENT TERMS

- 50% payment required on placing an order, balance on delivery.
- Unless another arrangement is agreed upon in writing with The Company and stated on the invoice.
- A separate invoice will be created for each purchase order. All products will be invoiced within 15 working days after submission of finalised PO from The Buyer.
- All payments made to The Company must be paid in GDP unless agreed in writing otherwise.
- All payments are to be sent to The Company via Bank Transfer.
- Any charges or fees payable to any bank for processing payment in respect of The Buyers' order is their responsibility and must be paid by them.

### CANCELLATIONS

- No cancellation of an order by The Buyer is permitted except where agreed by The Company in writing.

### LEAD TIMES

- Larger orders may require more time.
- Any processing or turn-around time mentioned thereof is based on estimates, The company do not guarantee that wholesale orders will be processed or delivered within the specific schedule. By placing an order, you agree that we shall not be liable for unavoidable delays.
- If The Company are unable to supply The Buyer with any product(s) ordered or if they are unable to comply with the time scale set out in the order, The Company will inform The Buyer of this by email as soon as reasonably practicable upon becoming aware of any such issues, The Company will not process the order until confirmation by The Buyer that they wish for us to proceed.

### SHIPPING

- The invoice created with the order will show the shipping costs to The Buyer unless another arrangement is agreed upon in writing with The Company.
- Shipping charges will be calculated separately and added to the wholesale order invoice.
- The Company reserves the right to increase shipping charges if Couriers increase charges to The Company. The Company will notify The Buyer in writing.
- The Buyer is responsible for all freight, duty, and taxes.

### DELIVERY

- All items due for delivery shall be delivered to the address at which The Buyer's account is registered unless The Company is otherwise notified in writing.
- Delivery and time frames will be determined at the time an order is placed with The Company by The Buyer. This can be anywhere between 12 to 14 weeks. If The Buyer requires delivery by a certain date please discuss this when placing your order.

### RETURNS AND EXCHANGES POLICIES

- No returns
- Any problems must be reported in writing or by email within 15 days of receipt of the goods. Please do not return goods before contacting us.
- Returned goods will not be accepted if held for more than 30 days after receipt.
- Any items that appear on the invoice and are missing from a shipment must be reported within 15 days of receipt of the order via email or phone. At that time, The Company will ship the missing items. If notification of missing items is not provided, The Buyer is liable for the amount due stated on the invoice.
- All shipping charges for returns, exchanges, and repairs are the Buyer's responsibility and cannot be refunded.
- If the partnership should cease and The Company agrees to the stock being returned, The Buyer is responsible for paying for the return of the goods.
- In case stock is returned, a 10-15% restocking fee will be charged.

### WARRANTY JEWELLERY

- Hotlips by Solange offers a 1-Year Warranty on all their Jewellery. Any manufacturing faults will be repaired free of charge within 1 year from the date of sale. The Company asks that the customers please provide them with proof of purchase (a date included) for this repair guarantee.
- Hotlips by Solange asks for customers to return the faulty item, to us. Once the damaged ring is received, The Company will aim to send the replacement to them within two working days. The Company asks that either The Buyer or The Buyer's customer covers the shipping costs to return the faulty item to Hotlips by Solange. The Company will cover the cost of returning the ring to The Buyer or customer. The Buyer or the Buyers customer will be liable for duties and taxes.
- The Company suggest customers follow the Jewellery Care Guide and suggest taking the ring off when washing hands, showering, swimming, or using hand sanitisers as this will prevent discolouration and too much moisture can cause the enamel to peel.

### CHOCCLIPS

- The Company will supply a credit note for any broken bars received.

### KISS MY LIPS WARRANTY

- In the case that there are any faults, The Company will supply a credit note for any damaged items which will be put against The Buyers account and can be used for future orders.

**HOTLIPS**  
BY SOLANGE





**READY TO ORDER?**  
**FOR PRICELIST**  
**E-MAIL US AT:**  
**GAIA@SOLANGE.CO.UK**

**HOTLIPSBYSOLANGE.CO.UK**