

DOMICILIARY



SINÉAD O'DWYER

SS22

S

SINÉAD O'DWYER

DOMIICILIARY

SS22 Press Release

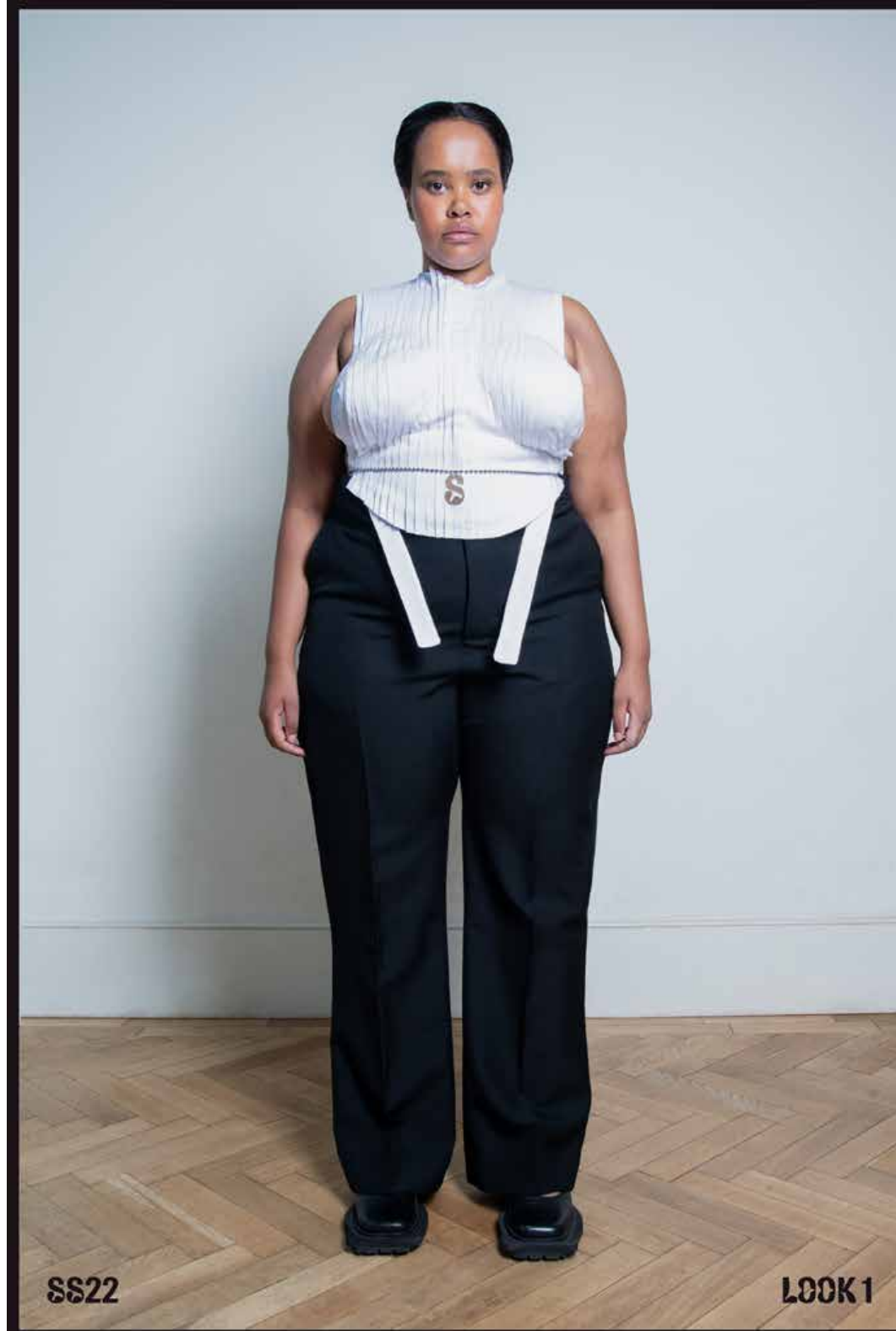
For SS22, Sinéad O'Dwyer continues her expansion into luxury ready-to-wear, reframing staid misconceptions around particular garments and clothesmaking techniques, and the bodies we associate them with. Drawing upon her own experiences of working as a nanny, babysitter and au pair, this season, she draws upon the often-caricatured sartorial vernacular of the domestic worker.

Vintage, black-and-white fetish illustrations of nanny roleplay scenarios and the study of historical domestic workwear inform a satin bib, a white cotton plastron and a sugar pink taffeta apron. The latter two garments exhibit one of the collection's flagship techniques, a fine pleating method typically employed in haute couture ateliers that moulds the bust, mirroring the designer's acclaimed cast silicone pieces. Elsewhere, Sinéad continues her exploration of stretch as a body-moulding technology, with shirred satin bloomer-inspired shorts, a leotard and a swimsuit, which all comfortably adapt to the contours of the individual wearer.

This exploration takes on a more explicitly fetish-y timbre in this season's stirruped bodysuits. Nodding to shibari bondage ties, interlaced bands of elasticated pastel and flame orange silk clad the body to harness-like effect. They're echoed by a new dress shape, which sees a helix of double-faced fabric coil about the body like knotted rope, revealing peeks of flesh beneath with each turn.

A tension between a soft sensuality and an imposing toughness informs one of the most significant additions to the Sinéad O'Dwyer vocabulary this season: tailoring. Cut from black and lilac deadstock wool sourced from Dormeuil, two suits exhibit the designer's deft pattern-cutting skills, with a darted bust allowing the front panels to fall flush with the body. The result is a fit that neither conceals nor overly reveals the chest — a bust shape that harmoniously moulds into the suit lines.

Further noteworthy developments include the introduction of Sinéad O'Dwyer jewellery -- mirror-polished stainless steel and silver waist chains featuring letter charms in a custom, curvilinear font -- and a continuation of the collaboration with London-based cordwainer Tabitha Ringwood. This season sees the return of the embroidered satin Mary Jane -- which features artwork of a queer femme orgy created in collaboration with illustrator Christa Jarrold -- and a brand new kitten heel silhouette.



SS22

LOOK 1



SS22

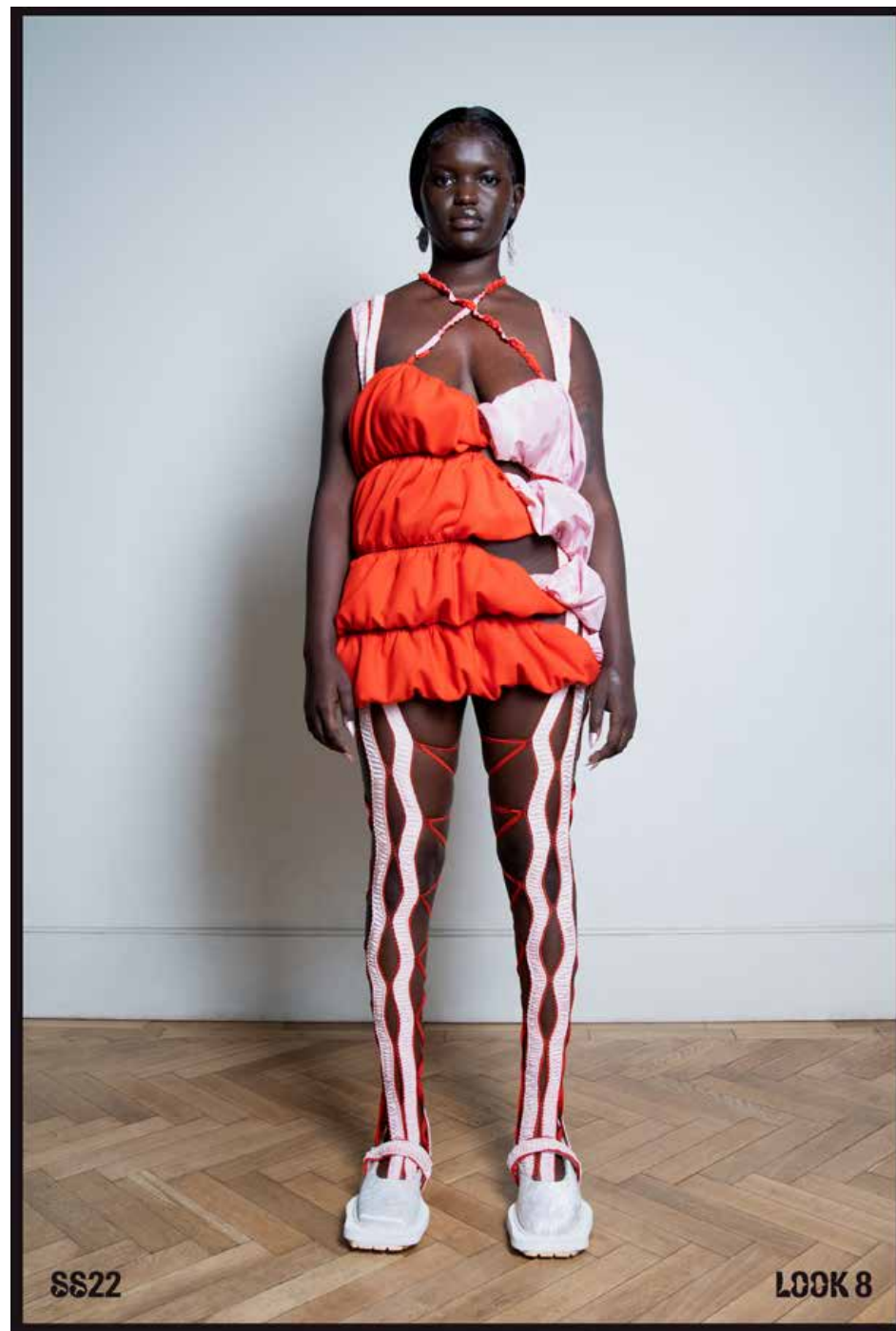


LOOK 2



SS22

LOOK 3









LOOK 10



SS22



SS22

LOOK 12











Watch film [here](#)





SINÉAD O'DWYER



SINÉAD O'DWYER

AW 21











